



Belgian Institute for
Pharmacoepidemiology
(IPHEB-IFEB), Brussels
e-mail : ifeb.contact@mail.apb.be

THE IPHEB-IFEB DATA BASE ON REIMBURSED DRUGS : AN EFFICIENT TOOL TO MONITOR DRUG EXPOSURE

Houben P, Lismont J, Marchal JL, Rezette I, Seys B, Spago B, Vansnick L

Relevance and methodology

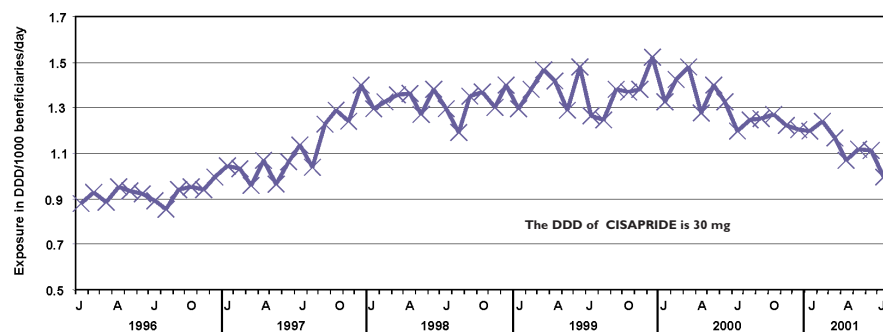
Pharmacovigilance needs to relate events to the drug exposure.
The IPHEB-IFEB is a non profit organization
which provides validated data on drug exposure 3 to 4 months after the delivering.

The IFSTAT© data base of the Belgian institute for pharmacoepidemiology (IPHEB-IFEB) registers anonymously the consumption of reimbursed medications from 1992. It collects census data on delivering in pharmacies which are transmitted to billing offices collaborating with the Belgian Pharmaceutical Association (APB). Data has been validated since 1996 by means of comparisons with invoiced amounts and by means of concordance studies with external sources.¹ The completeness is equal to 76,66%, coming from 80,1% of the Belgian pharmacies. The population concerned by the data set represents 9,2 millions i.e. 89,9% of the Belgian population.

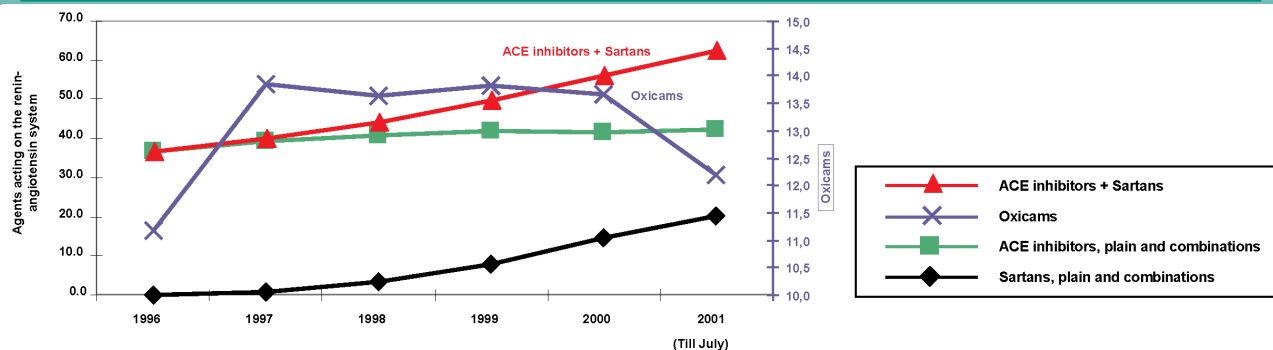
Indicators of exposure are : units (boxes), amount of active substance or DDD. Derivates of the DDD as DDD/ 1000 beneficiaries / day can be used, depending on the problem to be studied. Administrative classification variables are available about the patient, the drug and the pharmacy (location and month of the delivery). Gender and age are not yet available.

The data are structured following the ATC-DDD methodology, a WHO standard for statistics on pharmaceuticals. Results are available monthly from the lowest level of a drug package to each of the 5 aggregation levels of the ATC classification.

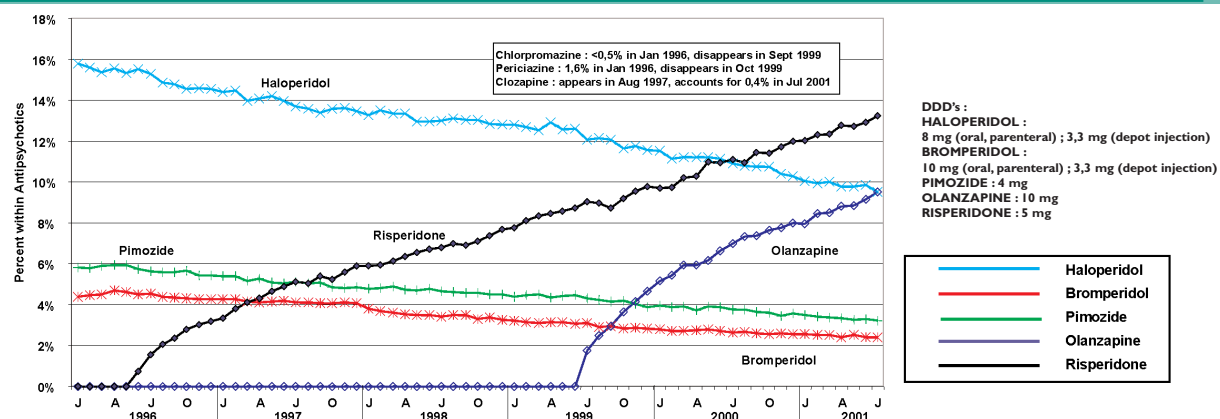
Example 1 : CISAPRIDE SINCE 1996



Example 2 : ACE-INHIBITORS, SARTANS AND OXICAMS (NSAID) YEARLY SINCE 1996
In DDD/1000 beneficiaries/ day



Example 3 : EVENTS IN ANTIPSYCHOTICS SINCE 1996
They account for 37.9% of volumes (DDD) in July 2001



Example 4 : ANTIDEPRESSANTS IN BELGIUM AND IN NORWAY

	Belgium (2001) DDD/1000 beneficiaries /day	Norway (2000) DDD/1000 inhabitants /day
Non selective monoamine reuptake inhibitors	5.9	4.5
Selective serotonin reuptake inhibitors	29.4	29.9
Others	10.7	7.0
Total	46.1	41.4

REFERENCES

- Seys B, Spago B, Houben P, Marchal JL, Vansnick L. Description and validation of a data base on drug dispensing in Belgium. Proceedings of the Vith Symposium of the Association of public Health. Brussels; November 27th 1999. Arch Public Health 1999; 57 (S), 43.
- Vander Stichele R.H., Bossens M, de Falleur M, Seys B, Elseviers M, Utilization of antibiotics in Belgium. Proceedings of the EuroDURG meeting 2001 Integrating drug utilization studies in wider Europe Prague, Czech Republic June 7-9 2001

Symposium Drug Interactions in Clinical Practice. Belgian Society for Pharmacoepidemiology. Brussels; November 17th 2001.